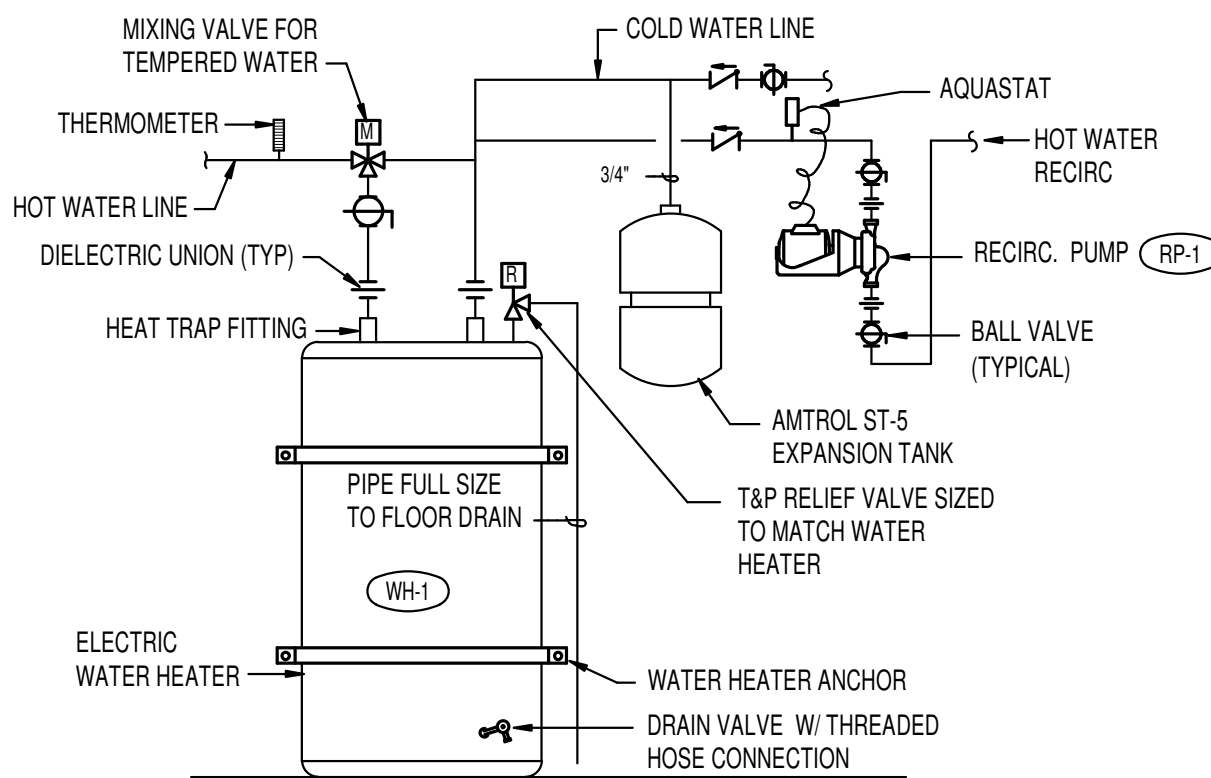
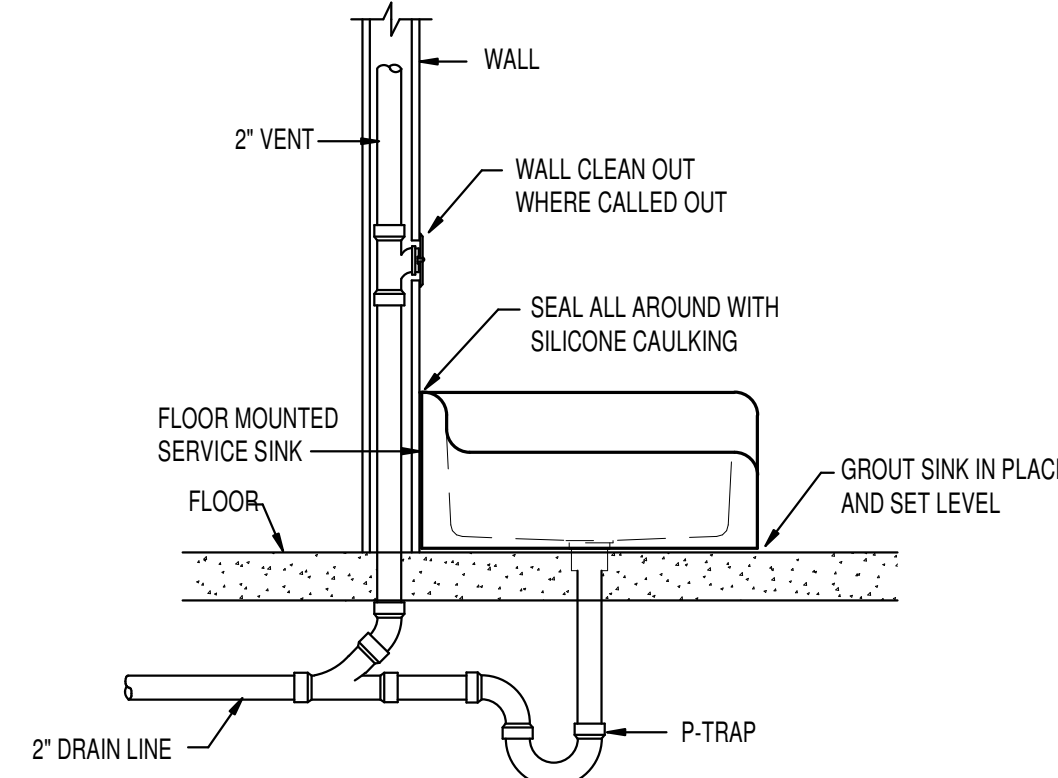


WATER PRESSURE REDUCING STATION DETAIL
NO SCALE

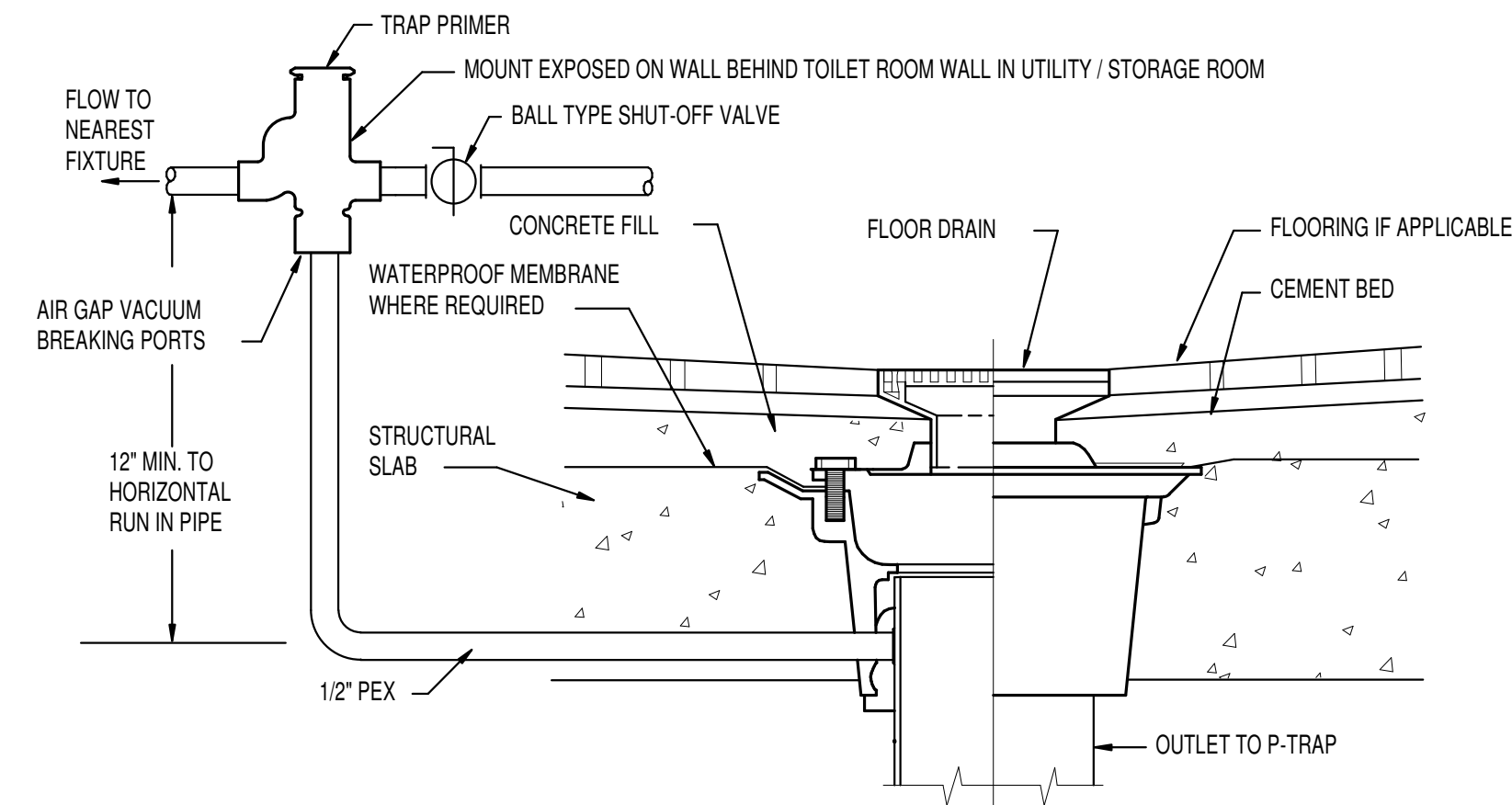


WATER HEATER PIPING DETAIL
NO SCALE

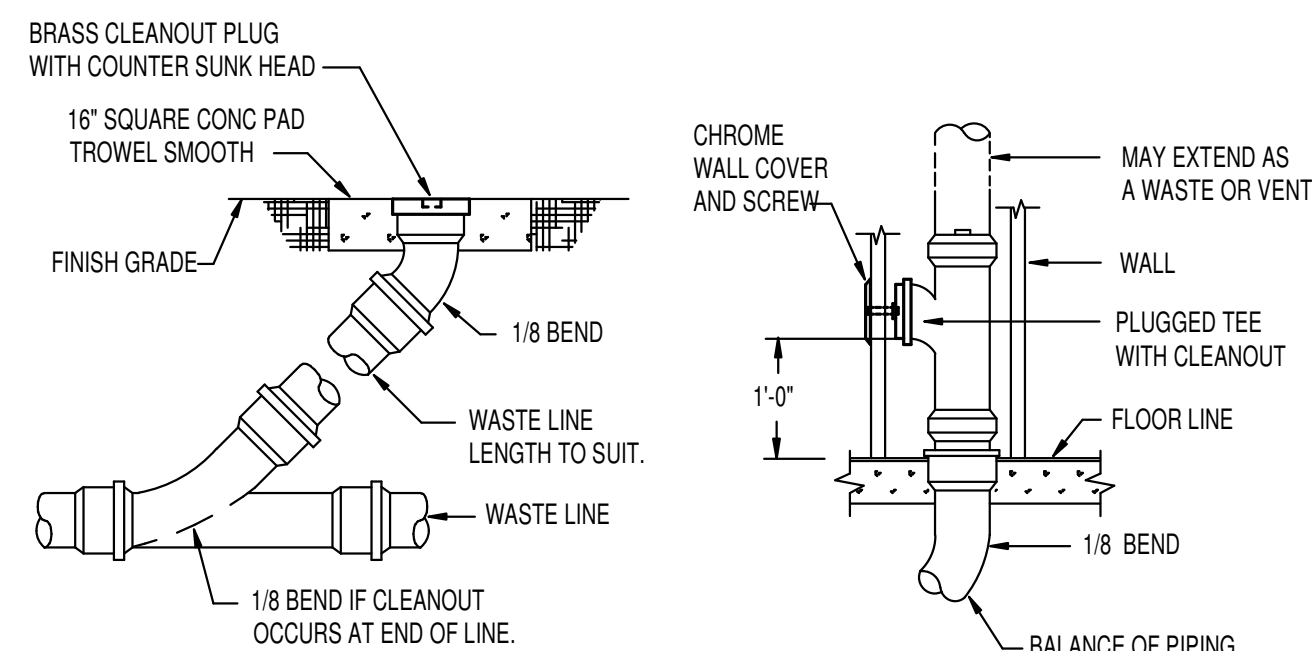


SERVICE SINK INSTALLATION DETAIL
NO SCALE

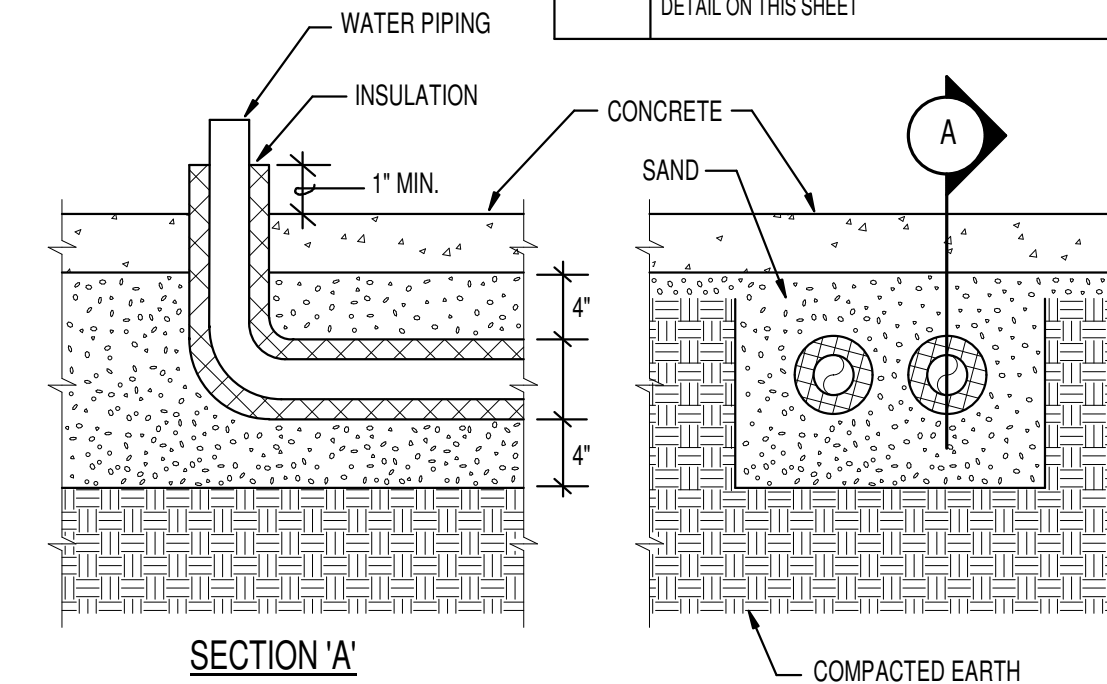
FIXTURE SCHEDULE					
SYM	DESCRIPTION	HOT	COLD	WASTE	VENT
DF-1	S.S. BI-LEVEL DRINKING FOUNTAIN - ELKAY MODEL EHW217C BI-LEVEL STAINLESS STEEL DRINKING FOUNTAIN WITH SIDE CONTROLS & S.S. WALL MOUNTING PLATE. MOUNT AT ADA HEIGHT.	1/2"	1/2"	2"	2"
FD-1	2" FLOOR DRAIN - ZURN Z-415 WITH 5" Dia NICKEL-BRONZE STRAINER AND 2" DEEP SEAL P-TRAP AND ZURN 1022 TRAP PRIMER ASSEMBLY MOUNTED ON WALL EXPOSED IN UTILITY ROOM / STORAGE ROOM.	---	---	2"	2"
FS-1	FLOOR SINK - ZURN Z-1900-KC WITH WHITE ENAMEL FINISH, DOME STRAINER AND 4" DEEP SEAL P-TRAP. PROVIDE HALF GRATE OVER SINK.	---	---	4"	2"
HB-1	INTERIOR HOSE BIBB - PRIER MODEL C-255NP 50 ANTI-SIPHON ANGLED SILL FAUCET WITH VACUUM BREAKER, REMOVABLE KEY HANDLE AND THREADED HOSE CONNECTION.	1/2"	---	---	---
IM-1	COKE AND ICE MAKER - TO BE FURNISHED BY OWNER (K.E.C. 4) PLUMBER TO PROVIDE 1/2" COLD WATER LINE WITH BACKFLOW PREVENTOR TO MACHINE WITH SHUT-OFF VALVE AND 3/8" ADAPTER. RUN 3/4" DRAIN UNDER COUNTER TO FLOOR SINK WITH DOWNTURNED 90 DEGREE ELBOW & AIR GAP.	---	1/2"	3/4"	---
IM-2	ICE MACHINE - TO BE FURNISHED BY OWNER (K.E.C. 6) PLUMBER TO PROVIDE 1/2" COLD WATER LINE WITH BACKFLOW PREVENTOR TO MACHINE WITH SHUT-OFF VALVE AND 3/8" ADAPTER. RUN 3/4" DRAIN UNDER COUNTER TO FLOOR SINK WITH DOWNTURNED 90 DEGREE ELBOW & AIR GAP.	---	1/2"	3/4"	---
JS-1	FLOOR MOUNTED SERVICE SINK - KOHLER K-6710 "WHITBY" W/ K-8940 WIRE RIM GUARD, K-8928 FAUCET ASSEMBLY & K-9142 STRAINER & DEEP SEAL P-TRAP. HOSE & HOSE CLAMP	1/2"	1/2"	2"	2"
L-1	ADA WALL MOUNTED LAVATORY - KOHLER 2023 "GREENWICH" (SIZE 20" X 18") WITH K-7715 OPEN GRID STRAINER, MOEN L4801 LEVER HANDLE FAUCET. 1/2" STOPS AND 1-1/2" P-TRAP. PROVIDE INSULATING JACKET ON WATER AND WASTE PIPE. PROVIDE CONCEALED ARM CARRIER SYSTEM.	1/2"	1/2"	1-1/2"	1-1/2"
RP-1	CIRCULATING PUMP - GRUNDFOS MODEL UP15-1087 BRONZE PUMP WITH 3/4" FLANGES (2 GPM @ 5' OF HEAD) 120/60/1	3/4"	---	---	---
S-1	SINGLE SINK WITH GOOSENECK FAUCET - ELKAY MODEL LR-2219 WITH 18 GA TYPE 304 STAINLESS STEEL CONSTRUCTION, 3-HOLE FAUCET DRILLINGS, LK-4100 LEVER HANDLE FAUCET, LK-99 STRAINER, 1-1/2" P-TRAP AND 1/2" BALL TYPE STOP VALVES.	1/2"	1/2"	1-1/2"	1-1/2"
U-1	ADA WALL MOUNTED URINAL - KOHLER K-4989-T "FRESHMAN" WITH WALL CARRIER & SLOAN REGAL FLUSH VALVE. MOUNT AT ADA LEVEL.	---	3/4"	2"	2"
U-2	WALL MOUNTED URINAL - KOHLER K-4989-T "FRESHMAN" W/ WALL CARRIER & SLOAN REGAL FLUSH VALVE.	---	3/4"	2"	2"
WC-1	ADA FLUSH VALVE WATER CLOSET - KOHLER K-4388 "HIGHCLIFF" WITH ELONGATED BOWL, K-4670C WHITE OPEN FRONT SEAT, SLOAN REGAL FLUSH VALVE AND CHINA BOLT CAPS.	---	1"	4"	2"
WC-2	FLUSH VALVE WATER CLOSET - KOHLER K-4350 "WELCOME" WITH ELONGATED BOWL, K-4670C WHITE OPEN FRONT SEAT, SLOAN REGAL FLUSH VALVE AND CHINA BOLT CAPS.	---	1"	4"	2"
WH-1	ELECTRIC WATER HEATER - A.O. SMITH MODEL EORT-40 40 GALLON ELECTRIC WATER HEATER WITH 4500 WATT UPPER & LOWER ELEMENTS (240/60/1). AMTROL ST-5 EXPANSION TANK, T&P VALVE. PROVIDE POWERS 3/4" LM-491-10 MIXING VALVE. SEE DETAIL ON THIS SHEET.	3/4"	3/4"	---	---



TRAP PRIMER DETAIL
NO SCALE

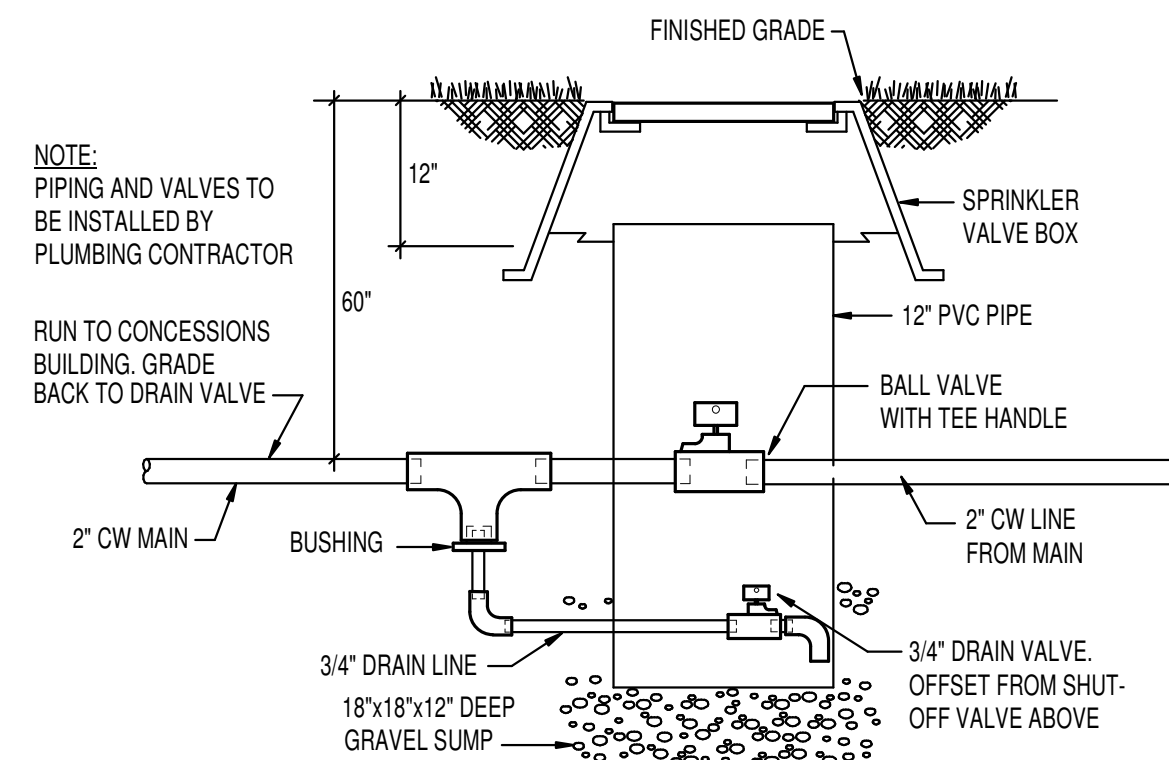


CLEAN OUT DETAILS
NO SCALE

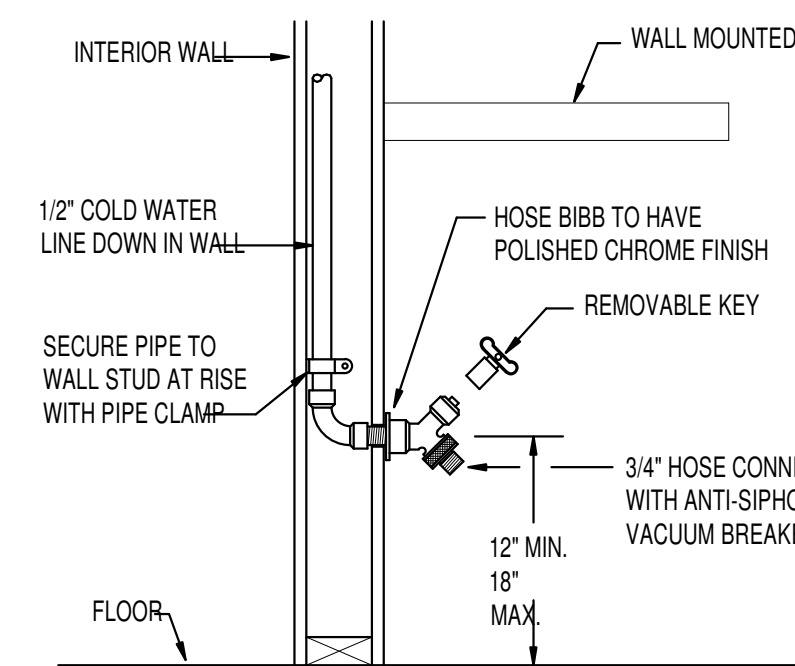


- NOTES:
- ALL WATER PIPING INSTALLED UNDERFLOOR SHALL BE TYPE "K" COPPER
 - WATER PIPE INSULATION ON UNDERFLOOR PIPING SHALL BE ARMAFLEX 3/4" THICK RUBBER PIPE INSULATION. TAPE INSULATION AT ALL SEAMS.
 - MINIMUM PIPE SIZE UNDERFLOOR SHALL BE 3/4"
 - SAND FILL AROUND PIPING SHALL BE A MINIMUM OF 4" THICK. MATERIAL SHALL BE HAND TAMPED, RODDED OR LIGHTLY COMPACTED DURING INSTALLATION. CARE SHOULD BE TAKEN NOT TO DEFORM OR OTHERWISE DAMAGE PIPING OR INSULATION.

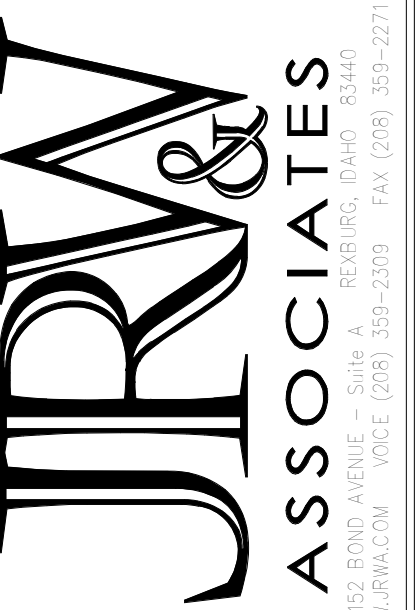
UNDER SLAB PIPE INSTALLATION DETAIL
NO SCALE



STOP & WASTE VALVE DETAIL
NO SCALE



INTERIOR HOSE BIBB DETAIL
NO SCALE



Consultants:

STRUCTURAL ENGINEERING
Frost Structural Engineering
1020 Lincoln Road
Idaho Falls, ID 83401
Tel: (208) 227-8404
Fax: (208) 227-8405

MECHANICAL ENGINEERING
Engineered Systems Assoc.
1335 East Center Street
Pocetello, Idaho 83204
Tel: (208) 233-0501
Fax: (208) 233-0529

ELECTRICAL ENGINEERING
Payne Engineering INC.
1832 East Center Street
Pocetello, Idaho 83201
Tel: (208) 232-4439
Fax: (208) 232-1435

Project:
CITY OF REXBURG JR BALL FIELDS CONCESSIONS

Drawing Title:
PLUMBING DETAILS & SCHEDULES

Revisions:

NO.	DESCRIPTION

Drawn By: SR Job Number: 788
Checked By: DCS Date: OCT. 2019
Plot Date: 10/9/2019 9:03:49 AM

Dwayne C. Schwab
REGISTERED PROFESSIONAL ENGINEER
STATE OF IDAHO, No. 10000

Engineered Systems Associates
1335 EAST CENTER
POCATELLO, IDAHO 83201
PHONE: (208) 233-0501
FAX: (208) 233-0529
EMAIL: esaa@engsystems.com
ESA JOB NUMBER: 19041

OCT. 8, 2019

Drawing Number:
P201

© JRW & ASSOCIATES, PLLC. DRAWINGS AND DESIGNS ARE PROTECTED BY COPYRIGHT AND THE ARCHITECT RETAINS TOTAL OWNERSHIP AND CONTROL. ANY UNAUTHORIZED USE OF DRAWINGS, DESIGNS OR IDEAS WITHOUT WRITTEN CONSENT OF THE ARCHITECT IS PROHIBITED.